



Advanced COPPER Solutions



10G CAT6a F/UTP

CAT6a F/UTP Solution

Introduction

The GlobalSIX F/UTP Augmented Category 6 solution offers the convenience and simplicity of a UTP system with the benefits of a shielded system where alien crosstalk plays a KEY factor .

The GlobalSIX G6A solution is a fully modular and component-rated solution. The new system, delivers exceptional performance for today's high bandwidth applications and is available through the GlobalSIX distribution network. Our modular, self-terminating keystone connectors have each been independently tested and verified by ETL to meet or exceed TIA 568-C.2 component performance for augmented Category 6 (CAT 6A) to support 10GBASE-T networks. When combined with approved horizontal cable, this ensures greater permanent link and channel margins to support 10GBASE-T networks up to 500 MHz.

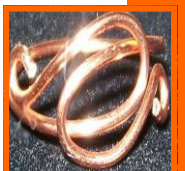
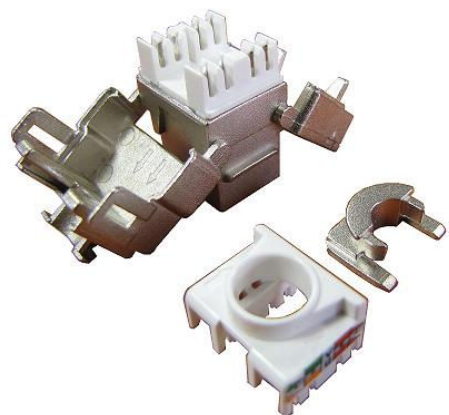
Characteristics



- Independently tested and verified by ETL
- TIA 568-C.2 performance up to 500 MHz to support 10G BASE-T networks
- Exceptional performance in critical short links common in data centres
- Guaranteed to surpass TIA defined internal and alien crosstalk parameters
- Backward compatible with CAT 5e & 6
- Tool-Less Terminations ensure cable to pin connectivity
- Modular system for increased design flexibility
- Supports Solid or stranded cable 22-26 AWG
- GlobalSIX Performance Warranty for qualified installations

Tool-less Terminations

- Fast and effective terminations
- Ensures all pairs are seated correctly
- All pairs are terminated equally
- Minimum un-twist of pairs
- Central, top entrance reduces delay skew
- Metal crimp case acts as shielding against ACR
- No grounding required
- Used on both ends of the link
- Cable support design



CAT6a F/UTP

Termination Options

T568A			T568B			Notes
Pin No.	Wire Color	Pair No.	Pin No.	Wire Color	Pair No.	
1	White-Green	3	1	White-Orange	2	1) Pin and pier numbers are per ANSI/TIA/EIA-568 2) For Token-Ring Applications use pins 3,4, & 4,5 3) For 10 Base-T applications use pins 1,2, & 3,6
2	Green		2	Orange		
3	White-Orange	2	3	White-Green	3	
4	Orange		4	Green		
5	Blue	1	5	Blue	1	
6	White-Blue		6	White-Blue		
7	White/Brown	4	7	White/Brown	4	
8	Brown		8	Brown		

Typical Test results - 75m (approved cable) - Red line indicates TIA standard.

